

© 2005 Mazda Motor of America, Inc.

Subject: DEACTIVATION OF SEAT BELT MINDER (PASSENGER SIDE)	Bulletin No: 08-007/05
	Last Issued: 09/13/2005

APPLICABLE MODEL(S)/VINS

2006 Mazda5 with VINs lower than JM1CR29**60106489 (Produced before July 16, 2005)

DESCRIPTION

Some customers may complain of a loud, beeping noise when placing small objects on the passenger front seat such as a briefcase or laptop computer. The noise occurs after placing vehicle in drive and exceeding a speed of 12 mph. The noise may be due to the seat belt minder.

The seat belt minder is a supplemental warning to the seat belt warning function established for North American specification vehicles. This feature provides an additional reminder to the passenger that the passenger's seat belt is not fastened, by intermittently emitting a beep sound and flashing the seat belt warning light in the instrument cluster.

The seat belt minder can be deactivated and restored again if the customer wishes. The following information is included in the Owner's Manual:

NOTE
The belt minder can be deactivated. Consult an Authorized Mazda Dealer to deactivate and restore the seat belt minder.

1415a

Refer to the Repair Procedure for customers requesting deactivation of the passenger seat belt minder function.

NOTE:

- This is a one time only courtesy for passenger side deactivation. It's purpose is to eliminate false chimes because of small objects (such as a briefcase) placed on top of the front passenger seat.
- Warranty will not be paid for the driver side deactivation.

REPAIR PROCEDURE

NOTE: Mazda North American Operations will not hold dealer responsible for carrying out the customer's request in disabling the belt minder under this Service Bulletin.

LONG-TERM DEACTIVATION

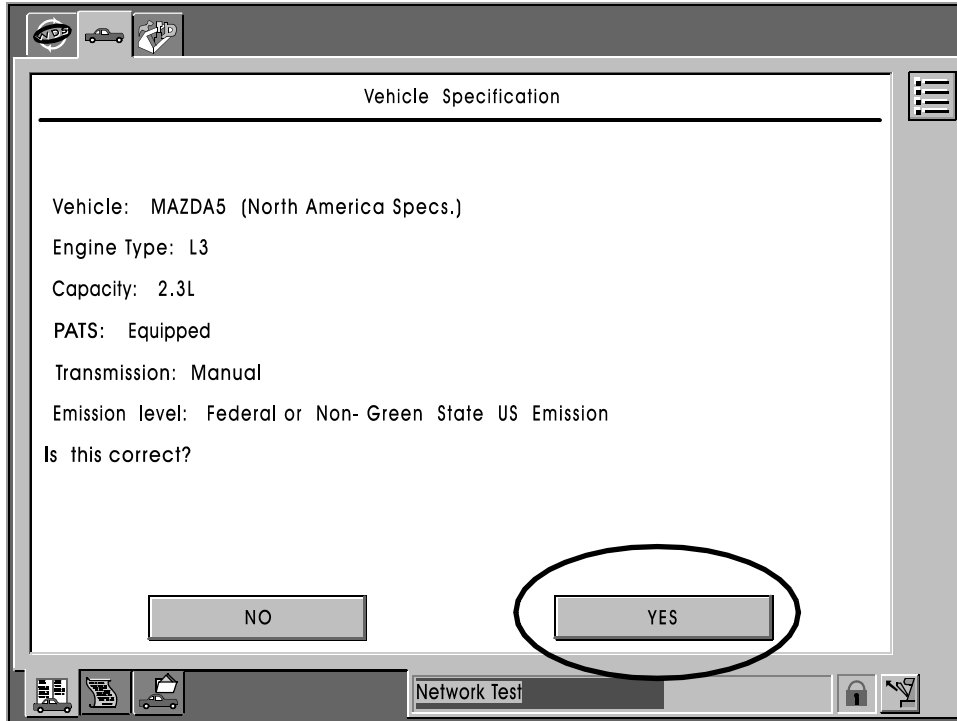
To deactivate belt minder long-term, instrument cluster configuration will be changed using WDS. If belt minder is deactivated long-term, it will remain deactivated until it is restored using WDS.

NOTE: Long-term deactivation cannot be canceled by turning ignition switch to OFF/ON or by disconnecting battery.

CONSUMER NOTICE: The information and instructions in this bulletin are intended for use by skilled technicians. Mazda technicians utilize the proper tools/equipment and take training to correctly and safely maintain Mazda vehicles. These instructions should not be performed by "do-it-yourselfers." Customers should not assume this bulletin applies to their vehicle or that their vehicle will develop the described concern. To determine if the information applies, customers should contact their nearest authorized Mazda dealership. Mazda North American Operations reserves the right to alter the specifications and contents of this bulletin without obligation or advance notice. All rights reserved. No part of this bulletin may be reproduced in any form or by any means, electronic or mechanical---including photocopying and recording and the use of any kind of information storage and retrieval system ---without permission in writing.

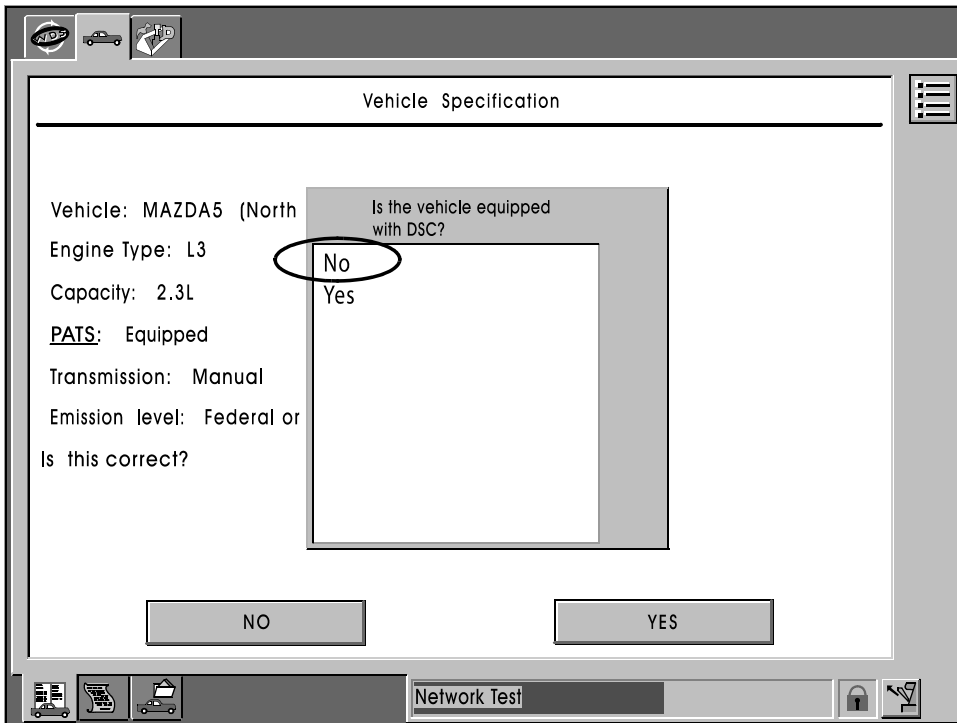
To deactivate belt minder long-term using WDS version B37 or higher:

1. Identify vehicle, verify "Vehicle Specification" recognition screen information.



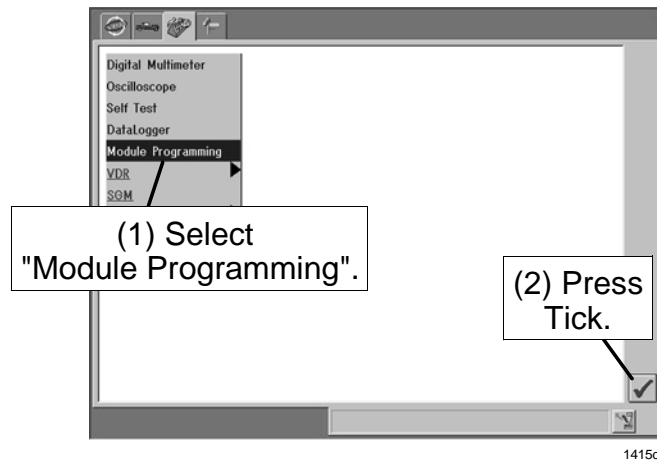
1511a

2. Is vehicle equipped with DSC? Select "NO", then press Tick.

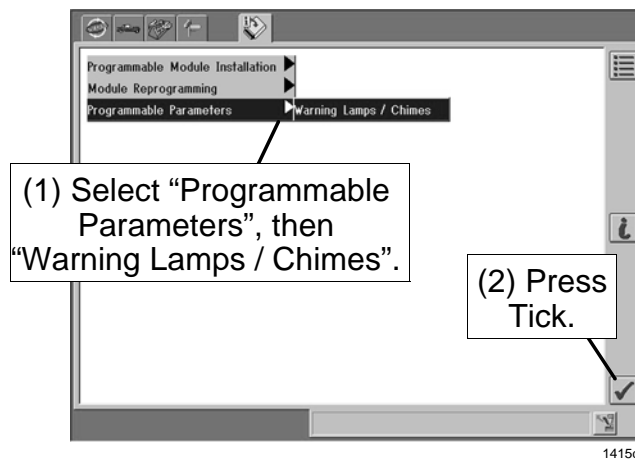


1511b

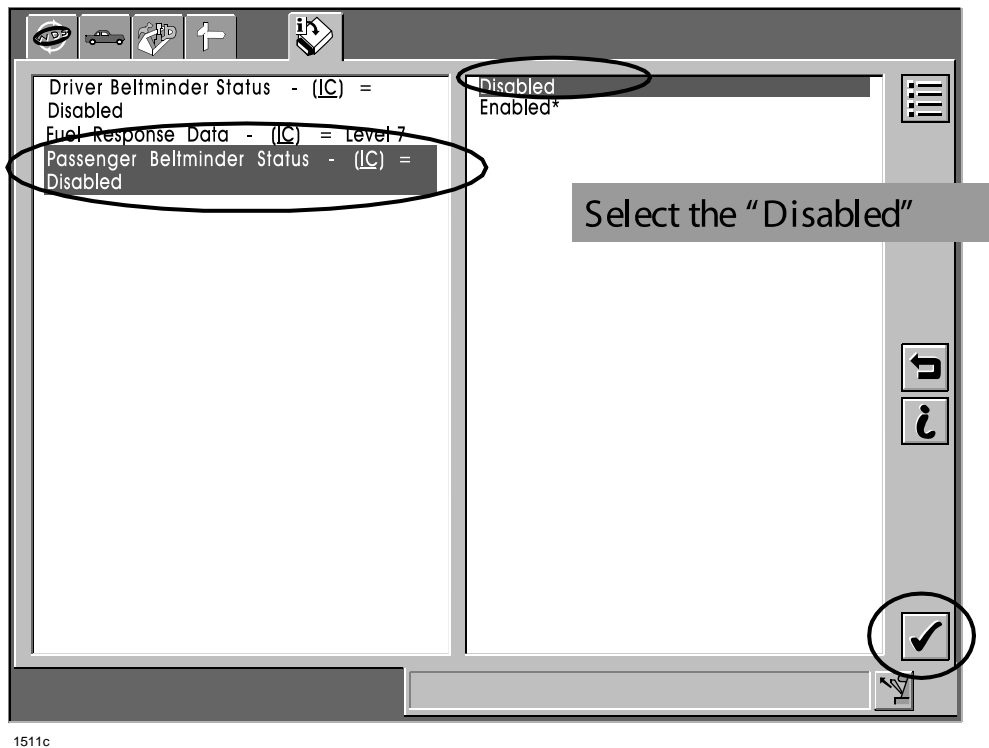
3. Select "Tool Box" tab at top of screen.
4. Select "Module Programming", press Tick.



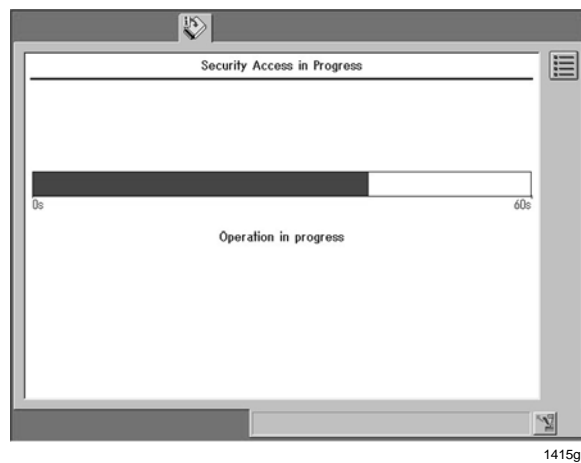
5. Select "Programmable Parameters" then "Warning Lamps/Chimes", press Tick (Twice).



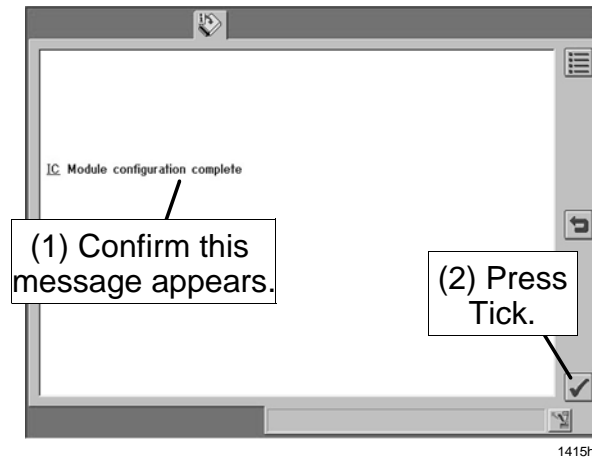
6. Select "Passenger Belt Minder Status - (IC)", then "Disabled", press Tick.



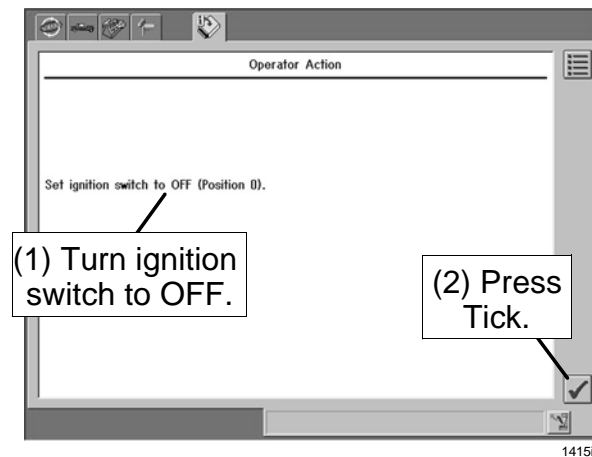
7. Verify IC (Instrument Cluster) configuration change.



8. Verify "IC Module configuration complete" message appears on screen.



9. Turn ignition switch to OFF position, press Tick.



IC (Instrument Cluster) configuration is now complete.

NOTE: If customer wants seat belt minder restored at a later time, repeat Steps 1-9 above. At Step 6, select "Passenger Belt Minder -(IC)", then "Enabled", press Tick.

WARRANTY INFORMATION

NOTE: Deactivation of seat belt minder is a one time only courtesy for the passenger side front seat.

Warranty Type	A
Symptom Code	62
Damage Code	9J
Part Number Main Cause	5555-05-019A
Quantity	0
Operation Number / Labor Hours:	XXB098RX / 0.2 Hrs.